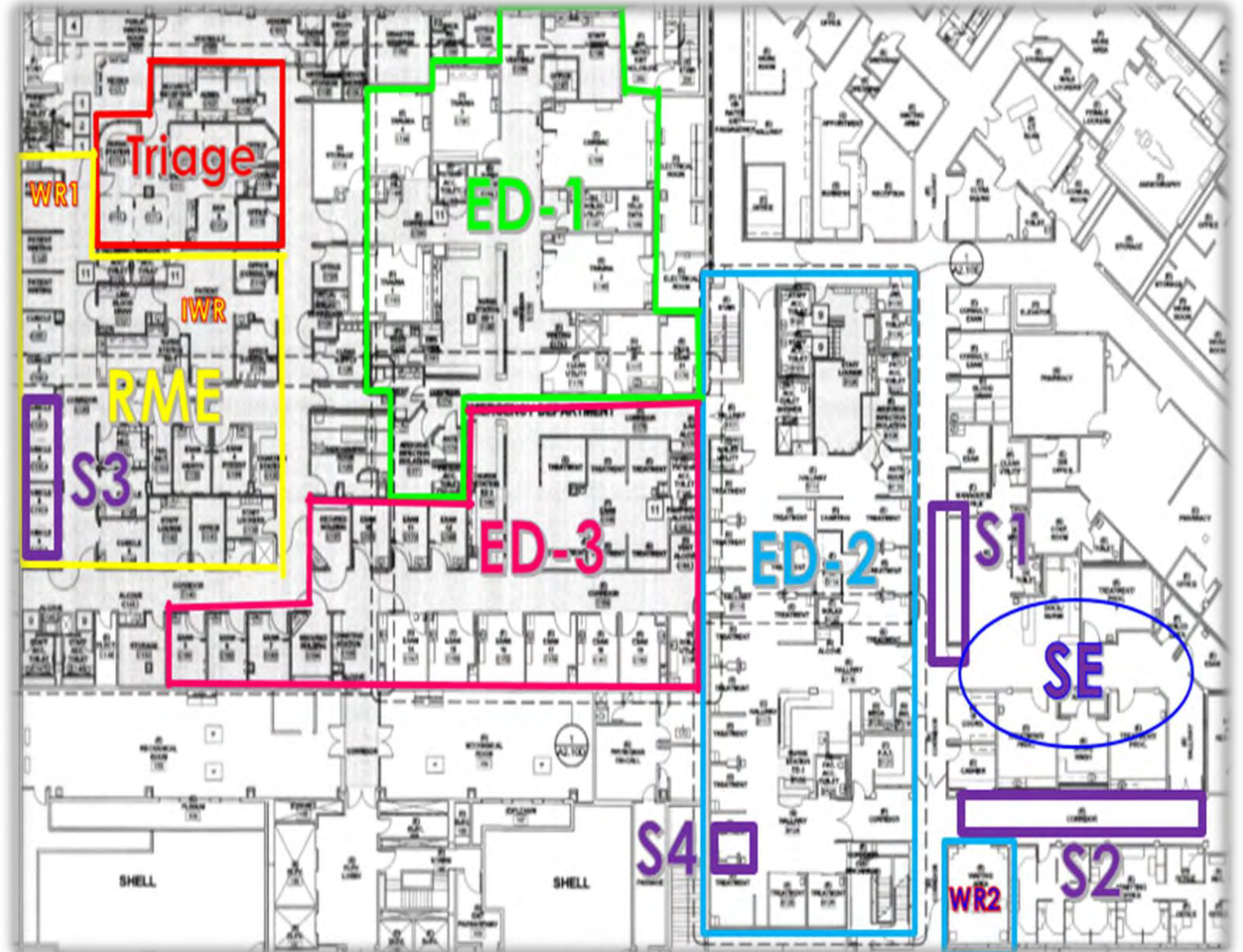


# ED SURGE PLAN

## ADDITIONAL SURGE CAPACITY:

- S1 – 4 VERTICAL TREATMENT SPACES
- S2 – 12 VERTICAL TREATMENT SPACES
- S3 – 12 VERTICAL TREATMENT SPACES (ROOMS 49, 50, 51 – 4 CHAIRS IN EACH)
- S4 – 4 VERTICAL TREATMENT SPACES (ROOM 4 – POD OF 4 CHAIRS)
- SE – ENDO SUITE USED FOR WR PATIENT EXAMS AFTER 5PM.
- TOTAL ADDITIONAL CAPACITY – 32 VERTICAL TREATMENT SPACES TO MITIGATE UP TO 32 HOLDS IN ED.



# ED SURGE PLAN

## HOLD ALLOCATION:

- H1: 42, 43, 44 & 45 – 4 ROOMS
- H2: 18,19,20,21,22 & 23 – 6 ROOMS
- H3: 9,10,11,12 & 13 – 5 ROOMS
- H4: 14,15,16 & 17 – 4 ROOMS
- H5: 5,6,7 & 8 – 4 ROOMS
- H6: 24,25,26,27,28 & 29 – 6 ROOMS

TOTAL HOLD CAPACITY – 29 PATIENTS

