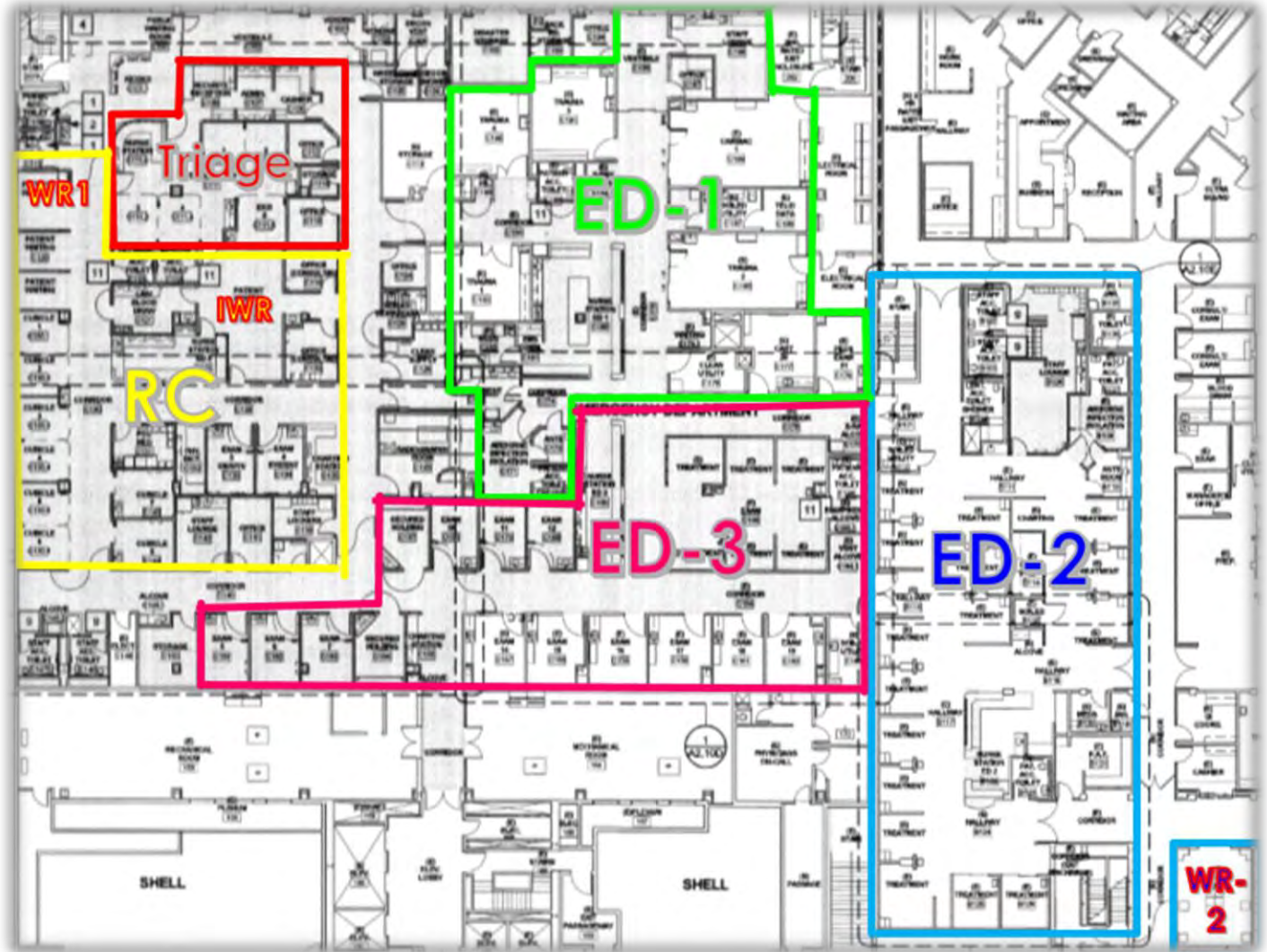


5 POD BREAKDOWN

- TRIAGE
- RAPID CARE (RC)
- ED 1
- ED 2
- ED 3



5 POD BREAKDOWN

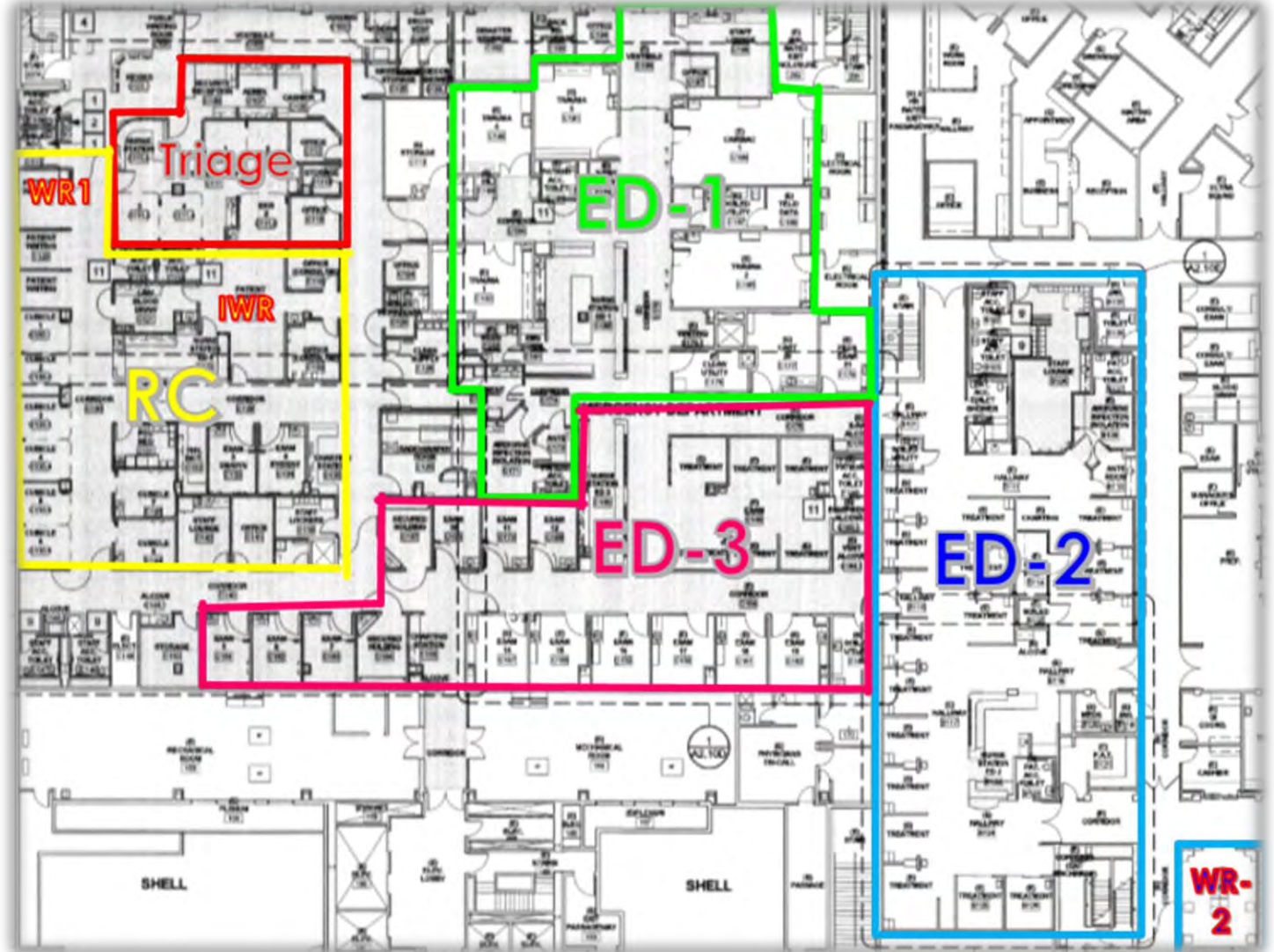
TRIAGE

CAPACITY:

- 5 FORMAL BAYS
- 1 SITTING AREA TO EXPAND TO 6 BAYS.
- 2 ROOMS FOR EKG'S.

STAFFING:

- PA STAFFING
 - 24/7 SINGLE COVERAGE
 - 8AM-2AM DOUBLE COVERAGE
- ED RN
 - 2 RN'S 24/7
 - 3 RN'S 1P-1A
- TECH 2'S
 - 2 24/7
- TECH 1'S
 - 1 24/7



5 POD BREAKDOWN

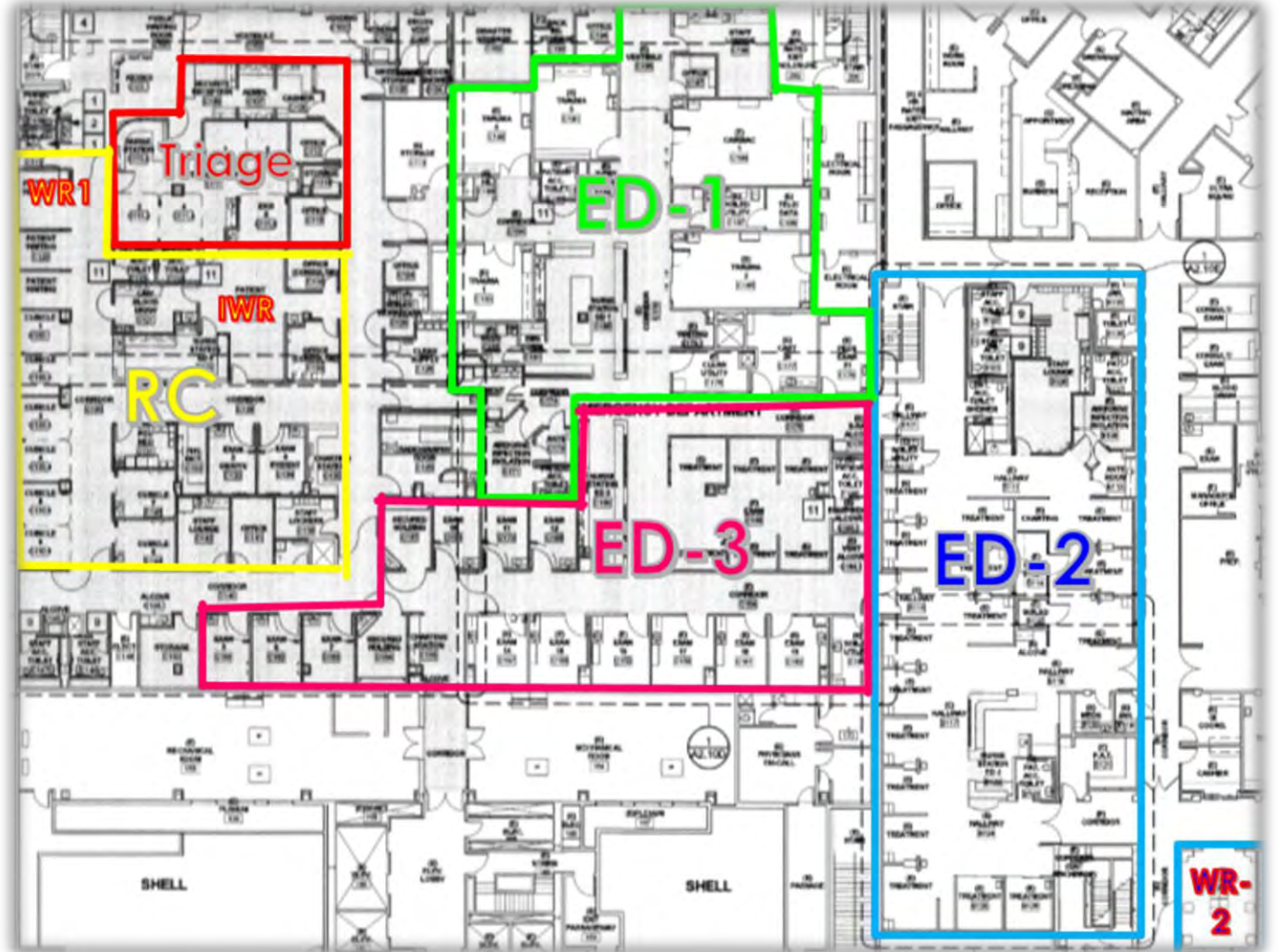
RAPID CARE (RC)

CAPACITY:

- WR1 CAPACITY 30 IN CHAIRS
- IWR CAPACITY IN FISHBOWL 20 CHAIRS
- 55, 54, 53, 52 – PODS OF 4 YIELDING 16 PATIENTS IN TREATMENT.
- 46, 47, 48, 49, 50, 51, CONSULT 1 & CONSULT 2 – 8 EXAM ROOMS FOR PHYSICIANS.

STAFFING:

- ED ATTENDING
 - 1PM-11PM
- PA STAFFING
 - TRIAGE COVERS RC 3AM-10AM
 - 10AM -3AM SINGLE COVERAGE
- ED RN
 - 1 RME LEAD 24/7
 - 1-4 RNS TO MEET INCREASED VOLUMES LATER IN DAY
- TECH 2's
 - 1 24/7

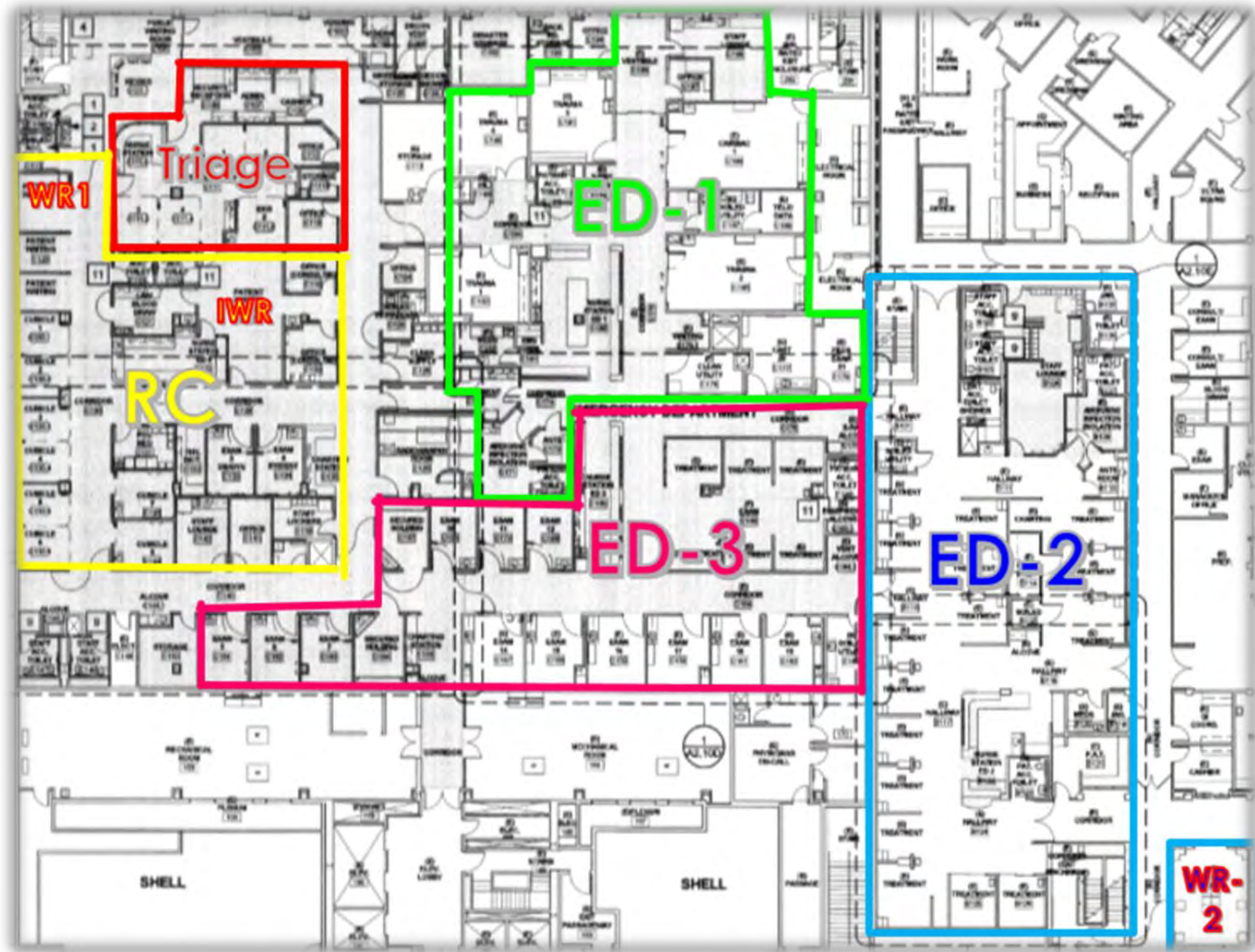


5 POD BREAKDOWN

ED 1

CAPACITY:

- 12 ROOMS
- ED ATTENDING
 - 4A-12P
 - 9A-5P
 - 3P-11P
 - 9P-6A
- PA STAFFING
 - TBD
- ED RN
 - 3 RN's 24/7
 - 1 MICN 24/7
 - 2 TRAUMA RNs 24/7
 - 1 STROKE RN 24/7
- TECH 2's
 - 1 24/7
- TECH 1's
 - 1 24/7



5 POD BREAKDOWN

ED 2

CAPACITY:

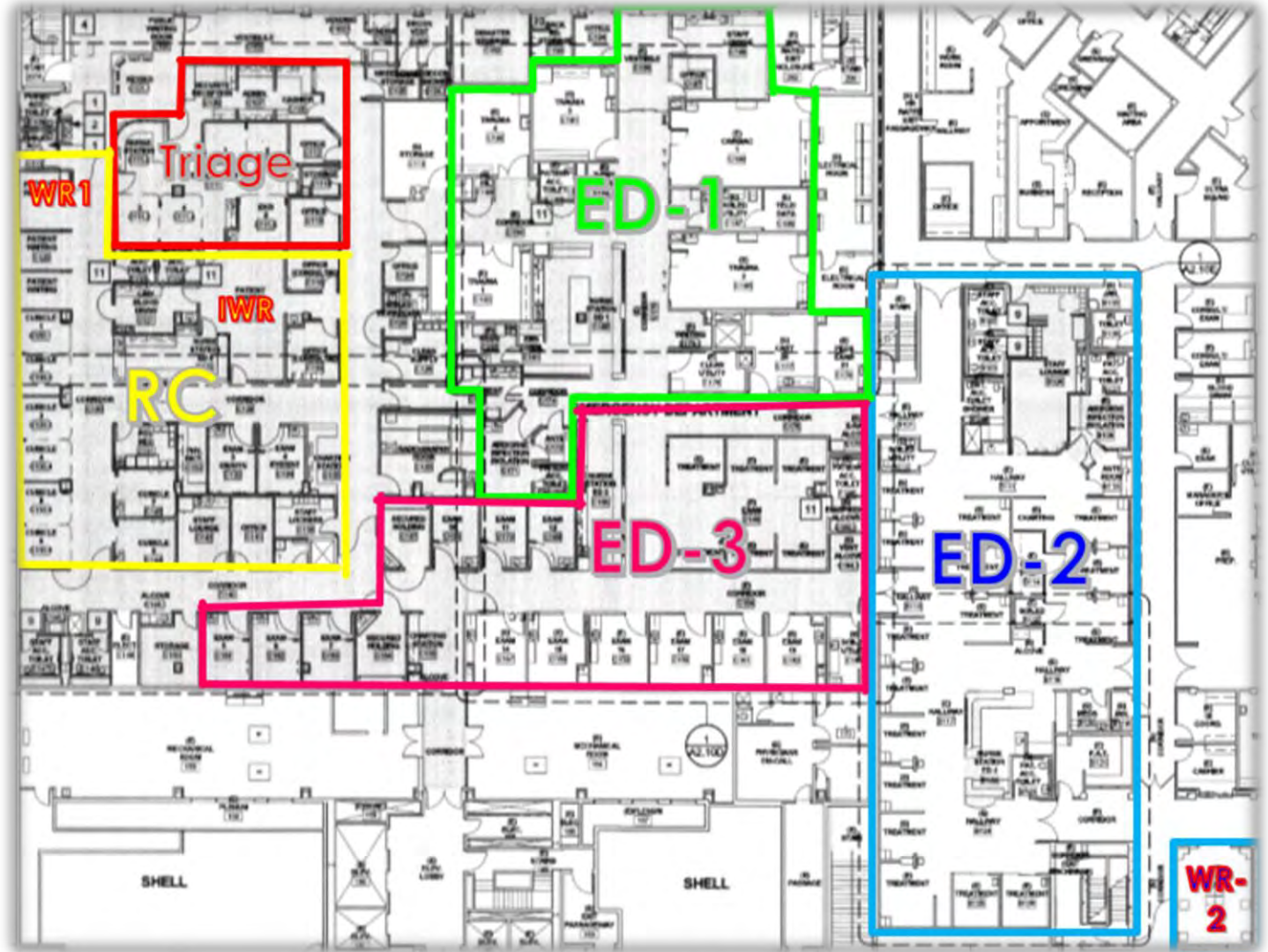
- 13 FORMAL ROOMS
- RM 3 – POD OF 4
- ROOMS 1,2,4 – MD EVALUATION ROOMS.
- WR2 CAPACITY 18

STAFFING:

- ED ATTENDING COVERAGE
 - 2PM-10PM
 - 8P-1A
- PA STAFFING
 - 11AM-2PM

RESIDENTS

- TBD
- ED RN
 - 4 RN'S 24/7
 - 2 RN'S 1P-1A
- TECH 2'S
 - 1 24/7



5 POD BREAKDOWN

ED 3

CAPACITY:

- 20 FORMAL ROOMS
- 8 HALLWAY PATIENTS

STAFFING:

- ED ATTENDING COVERAGE
 - 5A-1P
 - 11A-7P
 - 6P-3A
 - 1A-5A
- PA STAFFING
- ED RN
 - 2 RN's 24/7
 - 3 RN's 11AM
 - 5 RN's 1PM
 - 7 RN's 3PM
- TECH 2's
 - 1 11A-11PM
- SECRETARY
 - 1 11AM-11PM

